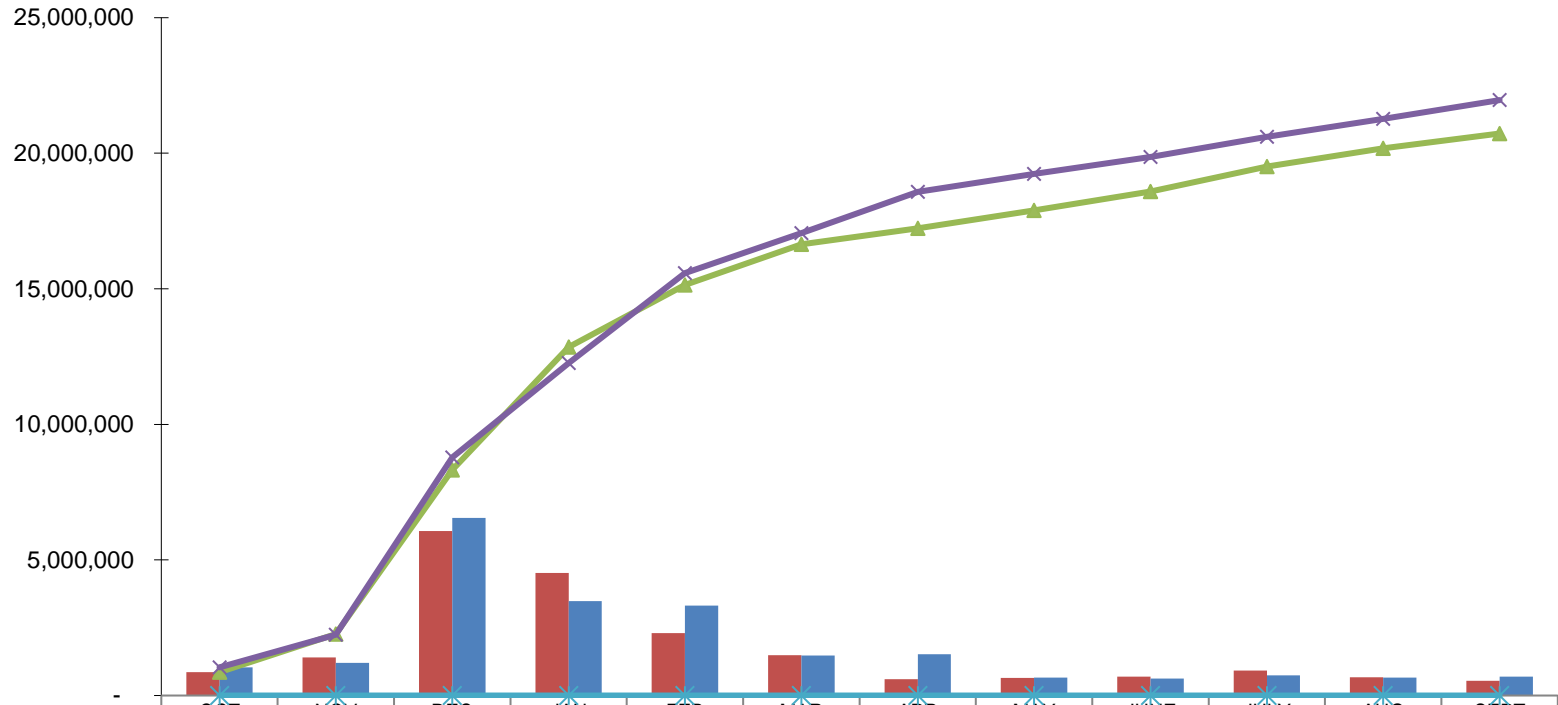


General Fund Revenue Trend Comparison



	OCT	NOV	DEC	JAN	FEB	MAR	APR	MAY	JUNE	JULY	AUG	SEPT
2019-20	860,318	1,404,237	6,061,236	4,524,934	2,297,400	1,488,786	597,004	654,641	701,675	922,771	670,675	544,324
2020-21	1,038,130	1,198,556	6,546,175	3,479,275	3,317,859	1,472,220	1,526,577	664,274	624,834	739,353	660,762	693,140
YTD 2019-20	860,318	2,264,555	8,325,791	12,850,725	15,148,125	16,636,911	17,233,915	17,888,556	18,590,231	19,513,002	20,183,677	20,728,001
YTD 2020-21	1,038,130	2,236,685	8,782,860	12,262,135	15,579,995	17,052,214	18,578,792	19,243,066	19,867,900	20,607,253	21,268,014	21,961,155
% Increase 19-20 to 20-21	20.67%	-1.23%	5.49%	-4.58%	2.85%	2.50%	7.80%	7.57%	6.87%	5.61%	5.37%	5.95%